



AS 2000 SERIES

PRECISION TRAILED & MOUNTED ISOBUS HYD DRIVE SPREADERS



FERTILISERS, LIME, GYPSUM, BIO-SUL – BULK FLOWABLE PRODUCTS

+ PRECISION SPREADING EQUIPMENT

[www.agrispread.com](http://www.agrispread.com)



REESINK  
Canada  
Wholesale





## A NEW GENERATION OF SPREADERS

The latest Agri-Spread AS2000 series is an advanced precision spreader, which takes simplicity, durability, capacity and accuracy to the next level.

Whether you are spreading fertiliser, lime, gypsum or Bio-Sul, the AS 2000 series precision Agri-Spread delivers the target rate at the highest level of accuracy. The new AS 2000 series is independently certified to spread fertiliser to 158 ft and lime to 50 ft. It's built to last, functional in design and is easier than ever to operate.

New features include redesigned hopper bin, chassis, floor roller system, disk feed hoppers featuring more stainless components and a new adjustable rear deck spinner system to ensure the highest level of accuracy and distribution of all products.

All models are available in the following section control formats:

- Single Belt – Auto On/Off – 1 x Section
- Single Belt – Section Control – 10 x Sections
- Twin Belt – Section Control – 14 x Sections

The AS2000 series takes care of variable rates using mapping technology and can accurately apply product with variable bulk density using dynamic auto calibration. Four load cells and a variable speed floor belt guarantees the target rate regardless of forward speed.

Reducing input costs by minimising over and under applications, Agri-Spread provide three Section Control options available throughout the whole AS 2000 series range. Taking care of the required spread width in either 1 x section (Auto On/Off) in single belt format, 10 x sections in single belt format or 14 x sections in twin belt format, working in conjunction with field shape and GPS map data alongside the already popular auto shut off for headlands and border control functions spreading is easily managed from the Agri-Spread VT controller meaning increased accuracy and effective spreading. And most importantly a reduction in fertiliser requirements from 5-15%

ISOBUS / VT compatible the Agri-Spread provides control of the spreader as well as recording input application data for farm management documentation from inside the cab. ISOBUS AEF Certified.

A significant development within the AS 2000 series range is the introduction of two new additional models, the AS 2220T & AS 2220T providing even more capacity than ever before.



# Constantly Evolving & Improving Design Features

As leaders in spreading technology the Agri-Spread team are focused on developing products to meet customers' changing needs. The enhancements that are offered with the new AS 2000 series encompass the need for capacity and simplicity whilst retaining the earned reputation of accuracy and durability.



## Hopper & Chassis

The 2000 series is released with a redesigned bin hopper shape with formed last laser cuts and folds to prevent material build up. The front panel is now completely fabricated with stainless steel along with the rear and the bottom third of the bin and full fabrication of extensions. Other new features include adjustable hitch options, two sight inspection windows and a swinging hydraulic hose holder. Stainless steel pressure and return lines are fitted to minimise oil temperature, increase longevity, and reduce maintenance. All other cabling is now encased inside the chassis rails to avoid cable erosion, corrosion, or damage.

## Load Sense Hydraulics

The AS 2000 Hydraulic Valve Assembly is compatible with tractors using load sensing hydraulics. The Disc spinners and belt drive(s) now independently control their hydraulic oil requirement. The new hydraulic valve assembly is standard on the new series and can also be operated as a fixed pump for non-load sensing tractors.

## 2K Spreading Deck System & Spinner Design

The AS 2000 series comes with a completely new spreading deck system with adjustable rear deck positioning. The spread pattern can be finetuned by adjusting the deck forward and back. Users can set spread bout width with the vanes, RPM and pattern distribution with the deck adjustment. The new two vane spinner design, one long and one short, creates an accurate and adjustable placement of product across the spread width. With the development of more fertiliser products options and blends the moving deck gives more options for settings to adjust for maximising accuracy and placement.



# FEATURES & BENEFITS

## Capacity

One of the developments of the AS 2000 series is the introduction of two new tandem axle models to the range. The AS 2200 and the AS 2220 providing even more capacity and productivity than ever before. Coupled with the durable Agri-Spread chassis system and a steerable axle, provides the consistent flotation that the Agri-Spread tandem spreader range is renowned for with farmers, growers & contractors worldwide.

## Simplicity

The AS 2000 Series is an advanced precision farming spreader that meets the requirements of convenience, serviceability, productivity, and accuracy. The spinner speeds are set from the cab based on the product being applied and spread width the application rate is always on target regardless of the product density or forward of product onto the disks to ensure the highest level of accuracy. Spreading data can be collected, processed to provide a record of the applied product, as well as how much was applied and where. Data then can be utilized in farm management applications to help maintain accurate spreading and nutrient records.

## Built to Last

All the nuts, bolts and hydraulic fittings are also stainless steel. The axle, flotation tyres, tandem axle suspension and drawbar suspension provides the smoothest ride for enhanced distribution and load carrying performance. Agri-Spread uses state-of-the-art surface treatment processes including steel shot blasting and two pack paint finish to provide longevity in corrosive and high wear environments.

## Variable Rate Technology (VRT)

Variable Rate applications utilises a pre-planned prescription map to optimise the use of products across fields where there is a variability in soil and crop nutrition. The ISOBUS user interface adopts the precision map to control the application rate based on the maps formatted information and GPS position. The AS 2000 uses the at the prescribed rate regardless of forward speed or product density. Working from a prescription map versus a set rate gets the application right where it's needed which can have significant impact on crop yield while reducing input costs.

## Accuracy

- Independently accredited to spread fertiliser up to 48 mtrs and Lime up to 16 mtrs.
- Various disc & spreading setup options:

### Fertilisers & flowable products

40 – 60 ft  
60 – 90 ft  
90 – 118 ft  
118 – 158 ft

### Lime, gypsum, manures, composts, basalt & bulk flowable products

26 – 50 ft

- Applies variable bulk density products with precision and control using dynamic weighing.
- Adjustable rear spinner deck and vane position to ensure an even spread regardless of product.





AS2.120-5C

Agri-Spread

**ACCURACY = EFFICIENCY**



# AS 2000 - MODEL RANGE



**AS265**



**AS285**



**AS2100**



**AS2120**



**AS2130T**



**AS2170T**



**AS2200T**



**AS2220T**



## CALIBRATION & TESTING

If the target rate is 1 lb/acre or 9,000 lb/acre or anywhere in-between, Agri-Spread test and calibration equipment has you covered. Agri-Spread test significant amounts of fertiliser products and rates each year. Test hall results give good base guideline spreader settings but in-field testing by owner is required due to product quality, composition and environmental field conditions etc.

Standard with each spreader, the high spec calibration kit includes test trays with dividing inserts, test tubes, bulk density meter. This kit has been designed to assist with the correct set-up and testing of the rate, flow and distribution pattern of spread products. Simple testing and recalibration ensure accuracy of spread over a range of products with different densities and properties. Agri-Spread recommends re-testing regularly and when changing products.



# PRODUCTIVITY IN THE PALM OF YOUR HAND.

## Agri-Spread App

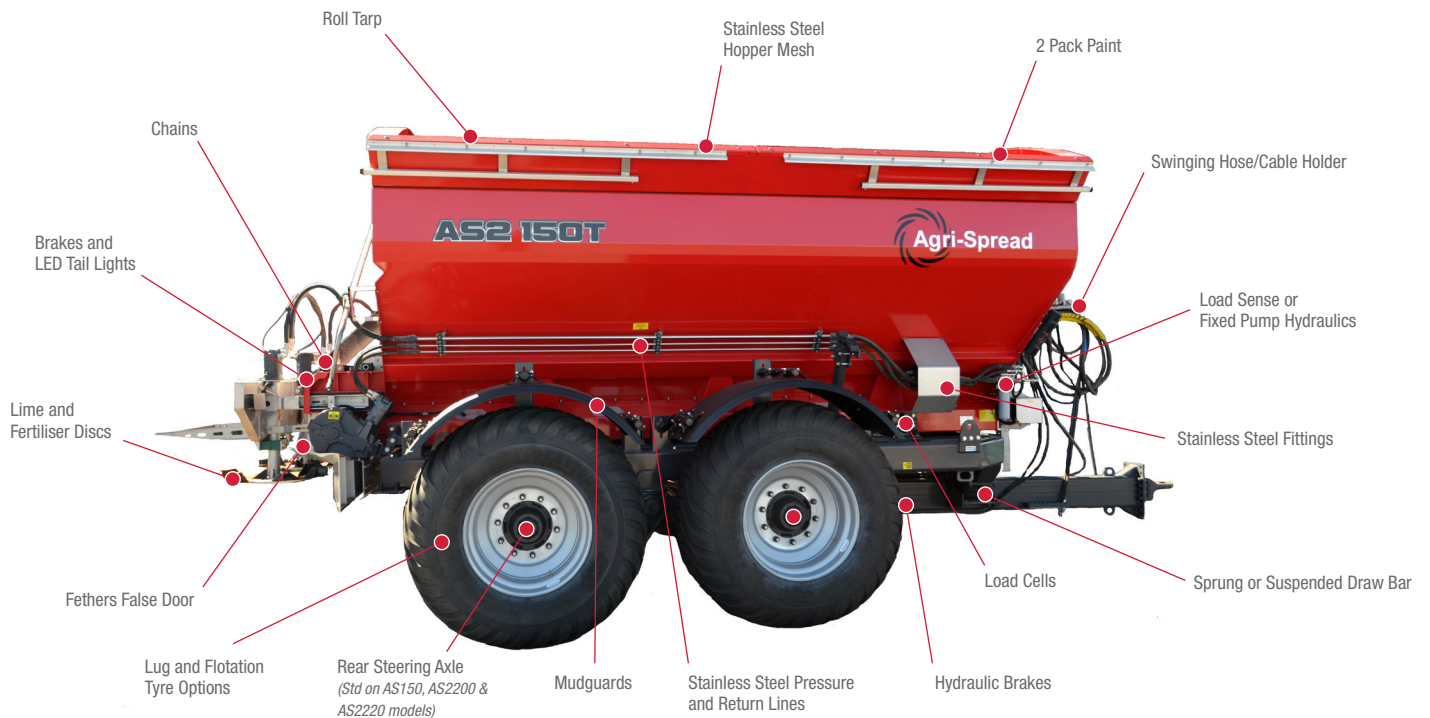
The Agri-Spread App is a link between ongoing back-up and support and is free to download. Not only does the app provide valuable setup and operational information, it's also where copies of the operators manual, including parts, maintenance and service, are shared and updated for everyone's convenience. All parts diagrams are clearly numbered and labelled.

Available now from the App Store and Google Play.





# KEY FEATURES



\*\*\*All designs, features, functionality, options & other product specifications are subject to change without notice or obligation

## Swinging Hose Holder

Secures hydraulic hoses and electrical cables. Pivots in the direction of travel to keep hoses and cable stress free on headlands and corners.

## Stainless Steel Hydraulic Pressure and Return Lines

Along the side of the bin, they offer superior performance, longevity and better heat transmission.

## Lime Discs

The extremely robust and hardened pressed steel lime disc & vanes are designed to handle the harshest of products whilst maintaining an even spread. Intended for lime, gypsum, manure, bio-sul and compost they are also available with optional Teflon wear plates to minimise potential build-up when spreading sticky products.

## Fertiliser Discs

Designed to handle product with care whilst maintaining an even spread pattern the Fertiliser Discs with adjustable vane position on the AS 2000 series maximise width whilst maintaining a low coefficient of variation (CV) no matter what the product.

## Stainless Steel Hopper Mesh

Made in smaller sections for easy lifting and removal for one person the stainless steel is longer lasting when using corrosive fertilizer products.

## Stainless Steel Fittings

The front end, entire rear section, and bottom one third of the bin is made from stainless steel. All the nuts, bolts, pipes, and hydraulic fitting are also stainless steel.

## Load Sense Hydraulics

With spinners and belt drives now independently controlled the hydraulic oil requirement for the AS 2000 is more variable than ever before, therefore ideally suited to tractors with load sensing hydraulics. As a result a new selectable load sense hydraulic valve block is standard on the AS 2000 spreaders to cater for both pressure compensating and load sensing.

## Axles

Agri-Spread axles are designed to suit all field conditions and have a reputation for being tough and reliable. The rear self-steering axle on tandem models minimises dragging when cornering making the spreaders easier to tow. There is much less soil and crop disturbance as well as less wear and tear on the undercarriage.

## Suspension

Agri-Spread fit drawbar suspension to all models to help minimise the effect of inertia energy transmission and to prove a smoother ride. To enhance the spread accuracy further, all tandem axle models have the addition of axle suspension to absorb impacts, providing a smoother ride, and better distribution at higher operating speeds.

## Lug and Flotation Tyre Options

Whether you require flotation tyres or prefer lug tyres Agri-Spread have options to suit any cropping situation. Tyre widths range from 300 to 800mm wide. Additional tyre options available subject to certain design limitations.

## Brakes & LED Tail Lights

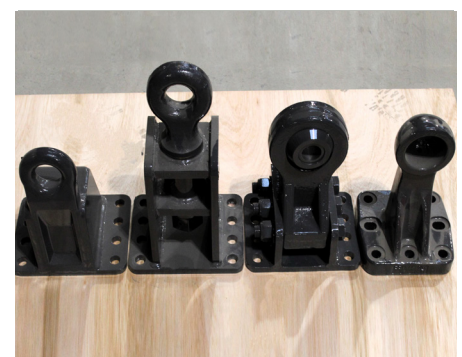
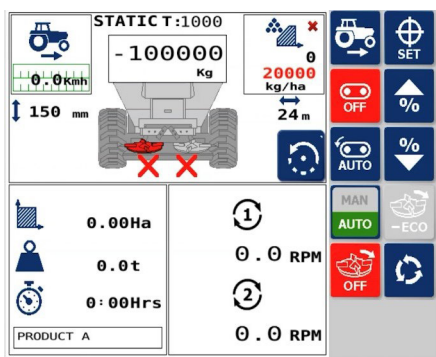
Whether you are on the road or in the field brakes provide the peace of mind you have control of a loaded Agri-Spread and the stopping power when you most need it. LED lights provide safety on the road and let other users know your intentions.

## Bulk Feed Chains

Maintain uniform flow of high bulk density products from the conveyors onto the spinners.



# KEY FEATURES



## Border Control

Border Control allows the adjustment of spinner speed from inside the cab at the touch of a button on the ISOBUS display to reduce spinner speed independently whilst boundary spreading to minimize wastage or overthrow.

## Stainless Hopper/Components

Painted grade 304 stainless steel components or optional full hopper provides complete rust protection. Minimizing maintenance and corrosion, the paint will increase the life and residual value of the spreader.

## Hitch Options

A range of hitches are available on request. Agri-Spreads hitch and drawbar design allows numerous options for hitch types and sizes

\*\*\*All designs, features, functionality, options & other product specifications are subject to change without notice or obligation



# Section Control - Precision Spreading Options



## SECTION CONTROL (Factory Option)

### Precision Application Technology – Automatic Section Control

The Agri-Spread 2000 Series spreader range consists of the following section control options:

- Single Belt – Auto On/Off 1 x Section
- Single Belt – Auto On/Off Section Control 10 x Sections
- Twin Belt – Auto On/Off Section Control 14 x Sections

#### Single Belt Auto On/Off

Standard base specification, single belt format with Auto On/Off GPS control, VRA ready, ISOBUS and single section coverage across working width. Headland border control either left or right position is also a one-touch operation to reduce the spread width on one side only.

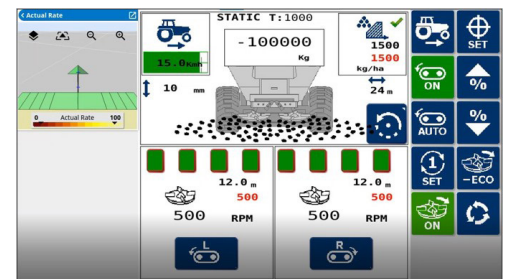
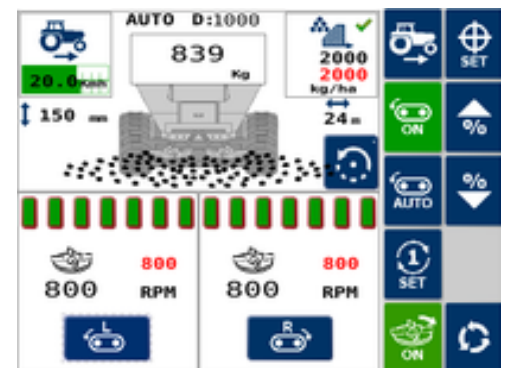
#### Single Belt Section Control – SCS Option

Standard base specification, single belt format with Auto On/Off GPS control, VRA ready, ISOBUS with optional “Section Control Single”. Enhancement in software and hydraulic configurations to enable independent LH & RH spinner speed reduction while also reducing belt floor speed as the working width is narrowed to ensure that the overall average application rate remains the same across the width being spread. 10 x sections possible, 5 left & 5 right. Boundary or headland spreading is also a one-touch operation to reduce the spread width on any side of the spreader.

#### Twin Belt Section Control – SC Option

Optional Twin Belt format with Auto On/Off GPS control, VRA ready, ISOBUS with two independent, hydraulically controlled conveyors via GPS, to feed material onto independently controlled hydraulic spinners to give the applicator the most precise distribution of product where required and 14 section coverage across working width. The twin belt system gives the spreader the ability to change the rate on either side of the machine in relation to the spread width/rate required. In conjunction to this, the spinner speed automatically changes speed to match the width required based on the number of sections turned off. As well as automatic section control, the operator can shut off one side of the spreader by the touch of a button. Boundary or headland spreading is also a one-touch operation to reduce the spread width on any side of the spreader.

\*\*\*Note: Lime/Gypsum and non-flowable products can bridge with single and twin belt spreaders





# TOTAL CONTROL



## AS 2000 SERIES SECTION CONTROL ADVANTAGES

### Main Features

- 1, 10 & 14 section swath width control options
- Flowable and non-bridging products capable
- Boundary spreading at the touch of a button
- Complete left/right shut off
- Variable rate spreading
- Auto Shut-off
- Proven hydraulic system (Load Sense of Fixed Pump option)
- Independent conveyor/spinner control and monitoring

### User Benefits

- Fertiliser savings of 5% - 15%
  - Proven ISOBUS software interface
  - Hydraulic controlled system
  - In-cab diagnostics for ease of use
- Load cells for precise applications built into the system
- ISOBUS AEF Certified





# AS 2000 SERIES TECHNICAL DATA & SPECIFICATIONS

MODEL	AS265	AS285	AS2100	AS2120	AS2130T	AS2170T	AS2200T	AS2220T
Bin Length, (feet & inches)	10' 10"	11' 11"	11' 11"	13' 10"	15' 3"	15' 3"	18' 6"	18' 6"
Bin Width, (feet & inches)	7' 4"	7' 4"	7' 4"	7' 4"	7' 4"	8' 7"	7' 4"	8' 7"
Loading Height (Inc Load Cells) ft & in	7' 8"	8' 6"	9' 2"	9' 2"	8' 11"	10' 3"	9' 5"	10' 3"
Capacity, Level (Cu Ft)	212	232	289	341	377	535	458	593
Capacity, Heaped 30° (Cu Ft)	275	305	357	420	479	652	587	742
Fert Capacity 1 10° (lbs)	14379	15794	19379	22928	25283	35801	30931	40237
Lime Capacity 1 30° (lbs)	20283	26455	29762	31967	41896	42990	51266	55116
Unladen Weight, (lbs) Note: Single Belt Config	8270	9848	10344	11081	13428	15753	17630	18231
Vertical Hitch Load – Unladen (lbs)	839	1086	1255	1492	1031	1208	1604	1713
Vertical Hitch Load – Laden (lbs)	4587	5827	6838	7773	8484	7655	10940	11031
Carrying Capacity, (lbs)	20283	26455	29762	31967	42990	42990	55116	55116
Tyres, (Standard)	650/65R30.5	650/65R30.5	650/65R30.5	650/65R30.5	600/55R26.5	710/50R26.5	650/65R30.5	650/65R30.5
Axle Section, (inches) Note: All 10 Stud	4x4" Square	4x4" Square	5x5" Square	5x5" Square	2x5" Round	2x5" Round	2x 5" Square	2x5" Square
Axle Track, Width Centres, (inches)	78" or 118"	78" or 118"	78" or 118"	78" or 118"	78" or 118"	78" or 118"	78" or 118"	78" or 118"
Sprung Drawbar	✓	✓	✓	✓	✓	✓	Hyd	Hyd
Stainless Profile Grids	Optional	Optional	Optional	Optional	Optional	Optional	Optional	Optional
Rate Controller Type	ISOBUS	ISOBUS	ISOBUS	ISOBUS	ISOBUS	ISOBUS	ISOBUS	ISOBUS
Variable Rate Ready	✓	✓	✓	✓	✓	✓	✓	✓
Hydraulic Brakes Std (Air Optional)	✓	✓	✓	✓	✓	✓	✓	✓
Transport Lights	✓	✓	✓	✓	✓	✓	✓	✓
Roll Over Cover Options (Manual/Elec/Hyd)	Optional	Optional	Optional	Optional	Optional	Optional	Optional	Optional
Bulk Product Feed Chains – Optional	Optional	Optional	Optional	Optional	Optional	Optional	Optional	Optional
Headland Border Control – Optional	Optional	Optional	Optional	Optional	Optional	Optional	Optional	Optional
Stainless Steel Hopper – Optional	Optional	Optional	Optional	Optional	Optional	Optional	Optional	Optional
Steering Axle Option- Rear (Tandem)	N/A	N/A	N/A	N/A	Optional	Standard	Standard	Standard
Sections x 10 Single Belt - Fert/Lime	Optional	Optional	Optional	Optional	Optional	Optional	Optional	Optional
Sections x 14 Twin Belt – Fert Only	Optional	Optional	Optional	Optional	Optional	Optional	Optional	Optional
Load Cells	Optional	Optional	Optional	Optional	Optional	Optional	Optional	Optional

Note 1: Capacity varies according to the density of material being spread. For the purpose of this table, densities of 1.4 and 1.0 have been assumed for lime and fertiliser respectively.  
 Note 2: Loading heights vary depending on the wheel specification and optional load cells..

- \*\*\* Agri-Spread reserves the right to modify or change designs, features, functionality, options & other product specifications without notice or obligation.
- \*\*\* Agri-Spread International makes no warranty, representation or guarantee regarding the suitability of its machine products to discharge and spread all possible fertilisers, manures, lime types, gypsum types, bio-sul types and other bulk product materials especially due to complex factors such as storage, temperature, moisture, humidity, bulk density, particle size, particle shape, friction, cumulative strength, interlocking, cohesion, ratholing and bridging etc.
- \*\*\* Spread testing and adjusting to get acceptable pattern CV's for infield conditions & product quality is required.

Agri-Spread International manufacture multipurpose fertiliser, lime, manure and bulk product trailed spreaders from their base near Ballyhaunis, County Mayo in the west of Ireland since 2006. A family owned and operated business, the award-winning company design products from a purpose-built production facility which has the latest technology, processes together with a skilled and dynamic team.



Coolnaha, Ballyhaunis, Co. Mayo, Ireland. F35 Y157 + 353 9496 31808 info@agrispread.com www.agrispread.com



Imported for Canada by:



16 Spinnaker Way, Unit 17  
 Concord, Ontario  
 L4K 2T8

877 361-2821  
 marketing@reesinkcw.ca  
 www.reesinkcw.ca